

DROP SEALS

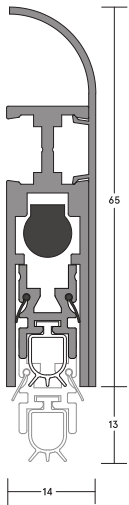
LAS8008 si

MEDIUM DUTY **30dB**

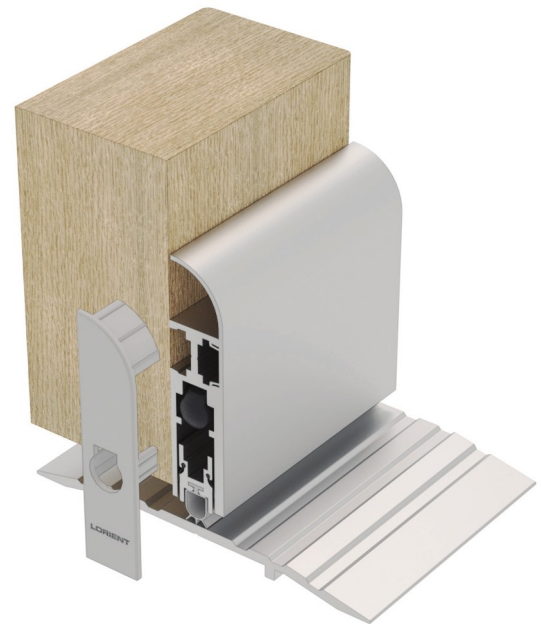
A slimline face-fixed automatic drop seal with a curved cover plate for enhanced aesthetics. It features a high efficiency mechanism, which lifts the seal clear of the floor as soon as the door is opened by a few millimetres; resulting in lower door operating forces. Requires no power connection. Self-levelling on uneven floors, seal height can be adjusted independently of fixing screws. Suitable for upgrading existing doors.



DROP SEALS



LAS8008 si



LAS8008 si (shown with LAS4011)

SYSTEM SPECIFICATIONS

Test evidence

- ▶ Acoustic: BS EN ISO 10140-2: 2010 (up to Rw 30dB).
- ▶ Smoke: BS 476-31.1: 1983.

Performance

- ▶ Meets smoke requirement: BS 9999: 2017. Suitable for use on timber fire doors.
- ▶ Protects against sound, smoke, fire, draught, light and insects.
- ▶ Suitable for wheeled traffic.

Location

- ▶ Single swing, single and double leaf doors.
- ▶ For use on both right and left handed doors.

Use with

- ▶ Any perimeter seal. Any threshold plate.

Min/max gap size

1mm/13mm.

Seal material

- ▶ Grey silicone rubber.

Standard lengths

- ▶ 335mm, 435mm, 535mm, 635mm, 735mm, 835mm, 935mm, 1035mm, 1135mm and 1235mm.
- ▶ Note: Each length can be cut back to the next size down. The 335mm can be cut back to 255mm.

Fixing

- ▶ Fixing screws are supplied, holes should be drilled at time of fixing. LAS8008 si is face-fixed only.

Adjustment

- ▶ Self-levelling on uneven surfaces.
- ▶ Can be adjusted independently of the fixing screws.

Finishes

- ▶ Silver anodised aluminium cover plate with grey end caps and grey silicone rubber gasket.
- ▶ Bronze anodised aluminium cover plate black end caps and black silicone rubber gasket.
- ▶ Black and light bronze anodised aluminium (non-standard - charges and lead times apply).
- ▶ Other powder-coated colour finishes (non-standard - charges and lead times apply).