



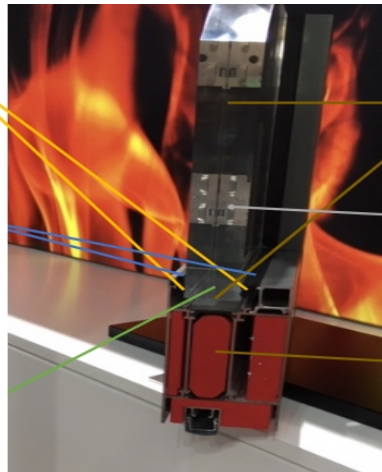
JUNTA AISLANTE FINOTECH no combustible

Aplicaciones

Finotech® Glazing tape

FINOTECH FS-GT

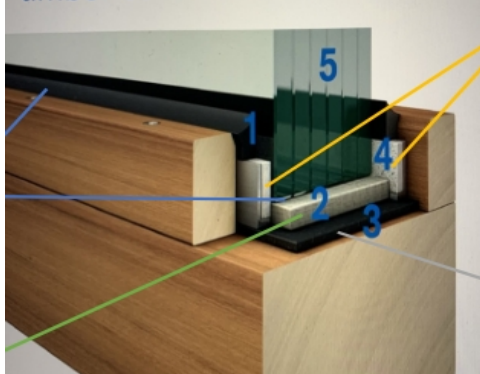
Calcium-magnesium-silicate fibre based tape



Junta aislante para protección térmica entre los vidrios cortafuegos y los junquillos, tanto en puertas cortafuego de madera como puertas cortafuego metálicas.

Se usa también en todos tipos de instalaciones vidrieras con características cortafuego.

timber construction



4. Finotech® Glazing tape

FINOTECH FS - GT

Calcium-magnesium-silicate fibre based tape

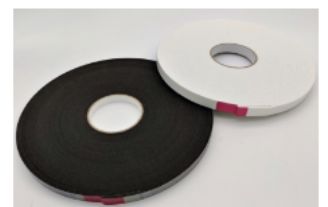
Características técnicas

Finotech® Glazing tape

FINOTECH FS-GT

Calcium-magnesium-silicate fibre based tape

- Easy application by non adhesive liner
- Soft and compressable
- Permanent - temp.- resistant 1200 °C
- Biodegradable
- Density 140 – 160 Kg/ m³
- Thermal conductivity 0,10 W/mK



Dimensiones :

Espesor (mm)	Largo del rollo	Ancho de la banda (mm)
3	22 metros	a petición
4	16 metros	a petición
5	10 metros	a petición



👁️ Puesta en obra

Fácil de poner en obra. No debe quitarse ningún papel de protección del autoadhesivo. El autoadhesivo se encuentra en la cara inferior de la banda. Es fácil de desenrollar sin arrancar fibra de la vuelta inferior.

Handling Instruction

Finotech® Glazing tape

FINOTECH FS - GT




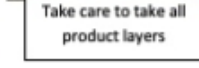

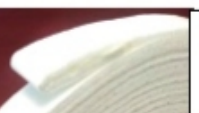
Calcium-magnesium-silicate fibre based tape



To apply the FINOTECH Tape it is necessary at first, to remove the red film.

Particular attention must be paid to this manipulation to avoid delamination of the product.



BAD HANDLING	✘	GOOD HANDLING	✔
	Taking off of the film in the direction of progress of the FINOTECH FS-GT = DELAMINATION		Take off the red film in the opposite direction to the progress of FINOTECH FS-GT
			Take care to take all product layers
			To ease the use of the roll for next handling, fold the end over itself at the end of the use